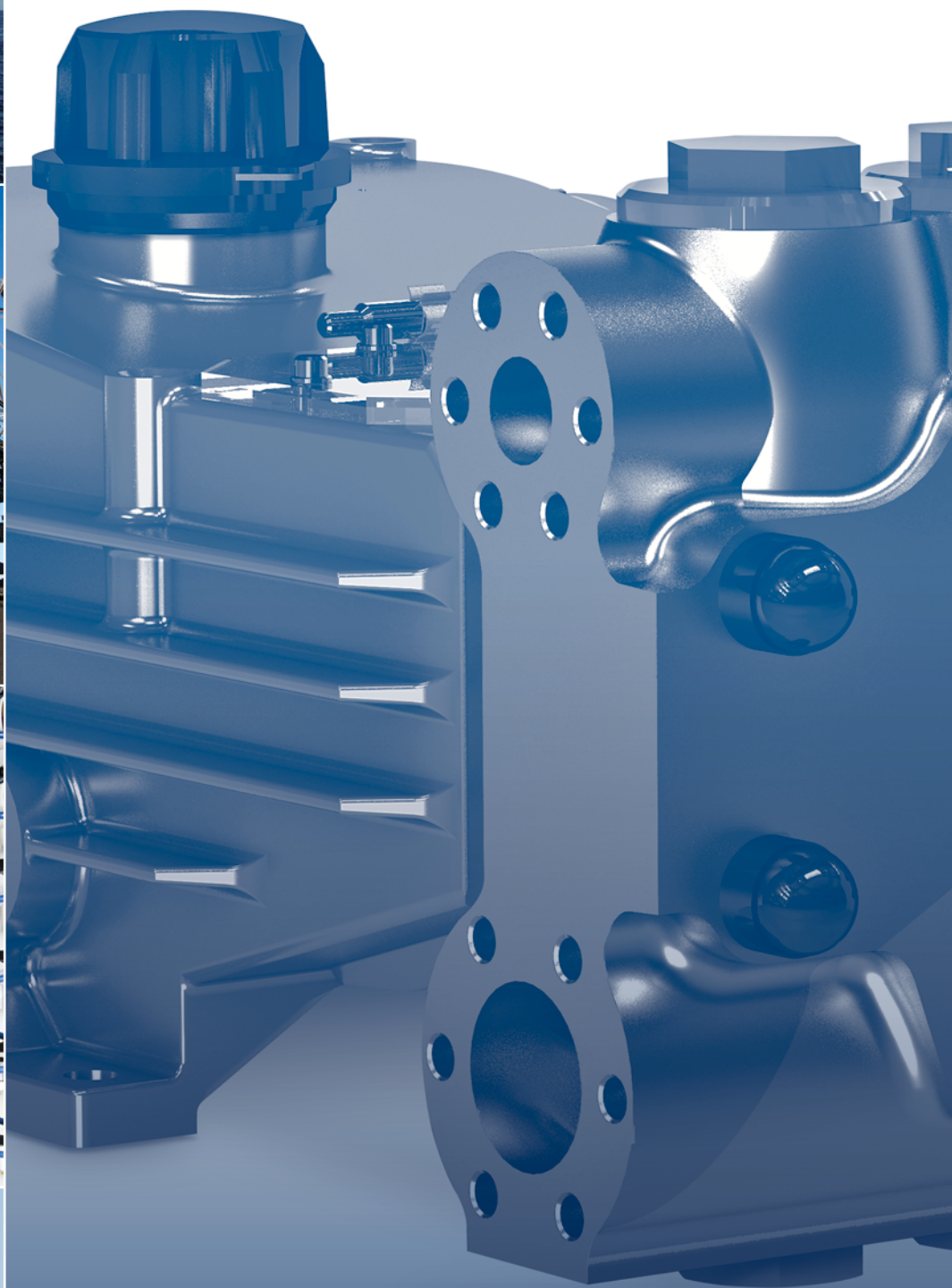




**RAM PUMPS**

Meeting The Toughest Challenges



# 50 HCH SERIES

Triplex Plunger Pumps



## Quality Products, Exceptional Customer Service

RAM Pumps Ltd.'s portfolio of Triplex & Quintuplex pump packages are designed and manufactured to the highest degree of precision to ensure total reliability and durability is maintained throughout our range.

RAM Pumps design is in full compliance to API674 along with most industry standards including, ISO 9001/2008, ATEX, EC P.E.D., NACE, Norsok, and GOST. These standards are rigorously maintained to ensure complete inclusion into the most arduous and demanding applications worldwide.

RAM Pump's commitment to flexible design and scope conformance has supported the evolution of a truly comprehensive supply. Including such auxiliary options as:

- Self-driven lubrication systems for both drive and seal arrangements.
- Condition monitoring to customer expectation and specification
- Multiple drive options and adaptations
- Direct mounting of dampers, PVS's etc. to the process fluid end for maximum effectiveness.

---

## Common Applications Include:

### Oil and Gas

Glycol Injection or  
Regeneration  
Methanol Injection  
Hydrocarbon Condensate  
Hydro Test

### Water Production

Drill Cutting Re-Injection  
Miscible Gas Injection  
Fracking  
Liquid Condensate  
Injection

### Reverse Osmosis

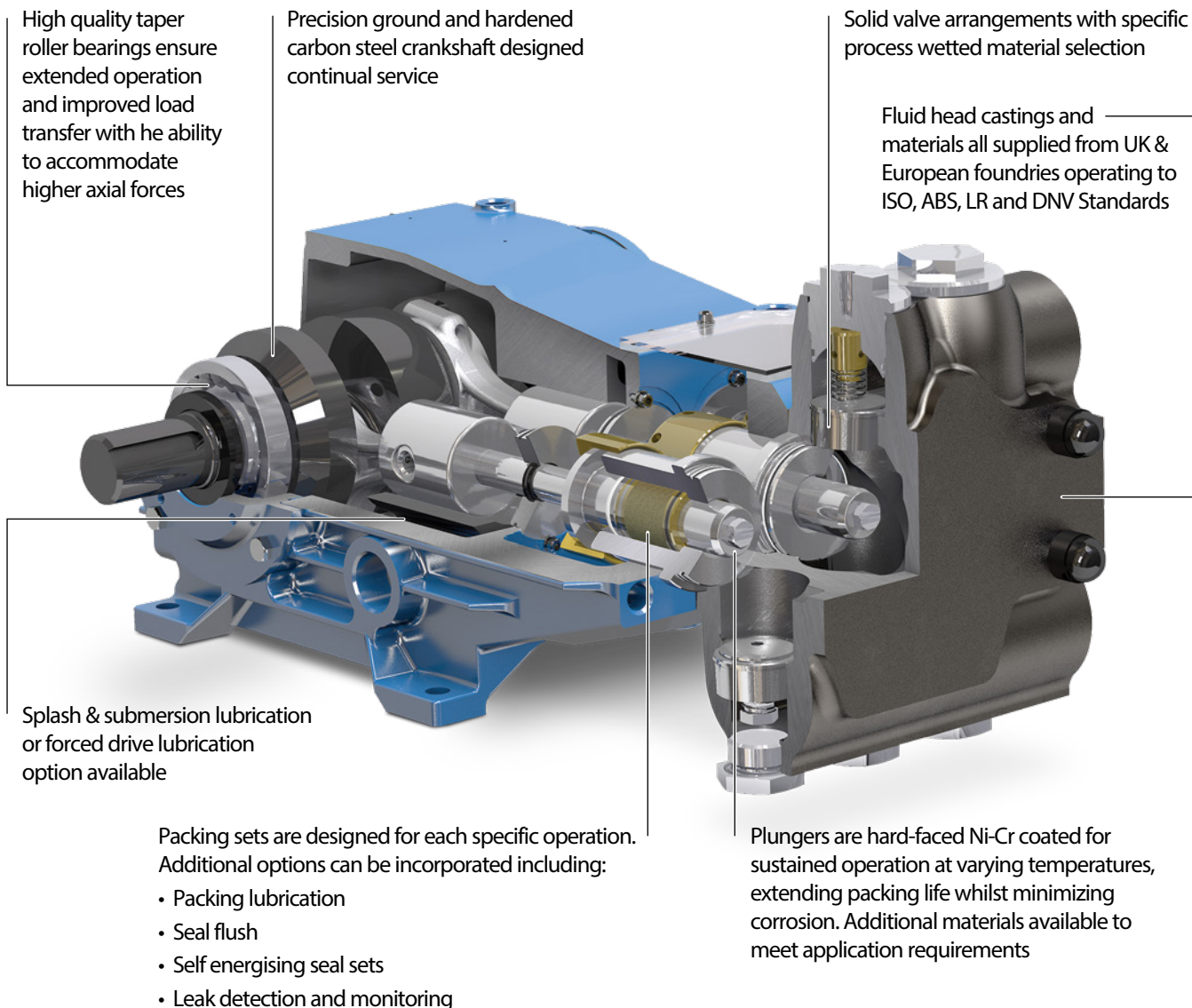
Desalination  
Food Processing  
Pharmaceuticals

### Industrial

Water Jetting  
De-Scaling  
Boiler Feed



# Quality Focused Design and Manufacturing



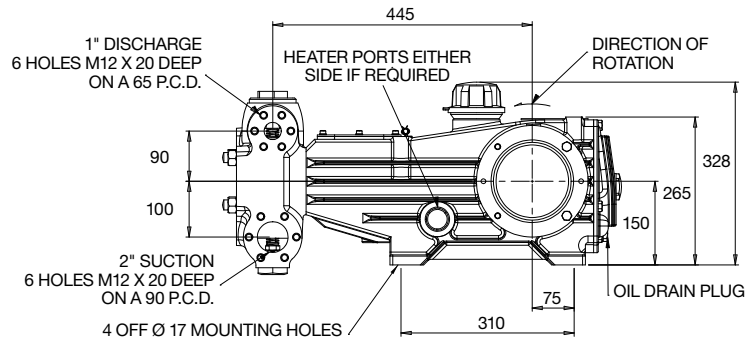
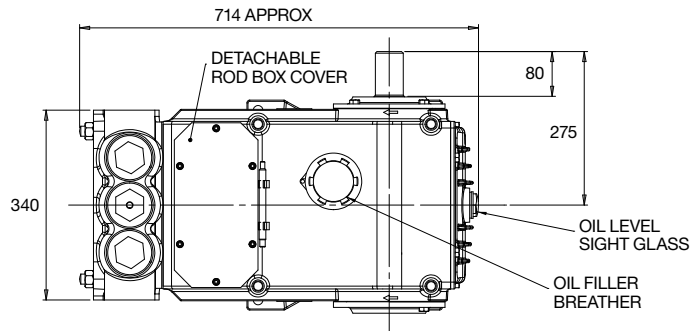
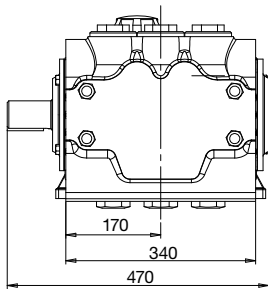
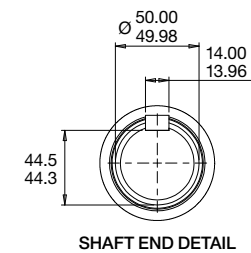
## RAM 50 HCH PERFORMANCE

Bore	Stroke	Max RPM (API)	Max RPM (Non API)	Max Flow (API) lpm / gpm	Max Flow (Non-API) lpm / gpm
55	65	420	600	185 / 48.8	264 / 69.8
50	65	420	600	153 / 40.4	218 / 57.7
45	65	420	600	124 / 32.7	177 / 46.7
40	65	420	600	98 / 28.8	140 / 36.9
35	65	420	600	75 / 19.8	107 / 28.3

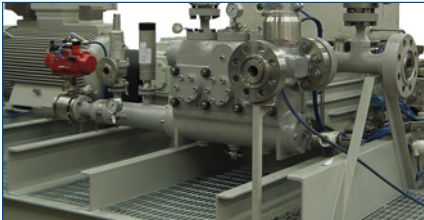
MAXIMUM PRESSURES		
Material	BAR G	PSI
Carbon Steel WCB	220	3,191
Carbon Steel Gr 90 60	571	8,282
316 Stainless Steel	200	2,900
Duplex 22% Cr	376	5,453
Super Duplex 25% Cr	402	5,831
Inconel 625	418	6,063

\*Maximum absorbed power rating for the Ram 50 HCH Series is 45 kW – Please ensure specific application data is calculated to determine maximum absorbed power required.

# Dimensional Drawing



## Standard Supply Scope



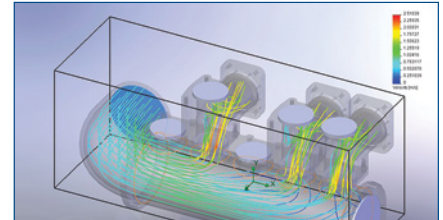
### Packaged Equipment

- Motors & Drives
- Diesel / Gas Engines
- Transmission
- Structural Fabrication
- Pulsation Management
- Valves & Filtration
- Instrumentation
- Electrical Control
- Lubrication Systems
- VSD / VFD Units
- PLC Control Systems
- Heating & Cooling
- Specialist Painting



### Inspection & Testing

- Material Certification 3.1, 3.2
- Hydrostatic Testing
- Performance Testing
- Mechanical Testing
- NDE - PMI, UT, DP, RT, MPI
- NPSH Testing
- Pulsation Analysis API674
- Mechanical Response Analysis
- ISO 9001 2008 Accredited
- ISO 14001 Accredited
- Supply to ABS, DNV, LR, KR
- Supply to NORSOK Standards
- NACE Compliance



### Project Services

- Dedicated Project Teams
- In House 3D Design
- FEA Analysis Verification
- Comprehensive Project Documentation
- Automated Document Tracking
- TPI Support Service
- Global Commissioning Service
- On Site Testing Verification
- Onshore / Offshore Engineering Support
- Aftersales & Support Network
- Global Representation
- Comprehensive Warranty Scheme
- Global Logistics Support

### Ram Pumps Ltd.

Unit 14, Hazelwood Trading Estate, Worthing, West Sussex, BN14 8NP  
 Tel: +44 (0) 1903 206622 • Fax: +44 (0) 1903 205511 • [www.rampumps.co.uk](http://www.rampumps.co.uk) • Email: [sales@rampumps.co.uk](mailto:sales@rampumps.co.uk)

©2016 Ram Pumps Inc. All rights reserved. 16167 3/16